



## Air Up

2010

Floor standing modular system with plinth of elements in mink colour leather effect laminated wood. The units (fronts/top/sides) are covered by 6mm tempered painted glass as per samples, in the bright or satin version. The inside is made of leather effect laminated wood in mink colour. Bright anodised aluminium metal parts. Base and spacers in mink colour leather effect laminated wood. For room divider or double-sided compositions, a 6mm tempered painted glass back in the same finish of the unit is available. Modules can be placed side by side or superimposed. It is recommended to place no more than 3 modules.

Cm (L x W x H)

U01 UP / U02 UP / U02R UP / U03 UP / U04 UP / U05 UP / U07 UP

90 x 51 x 48.1

120 x 51 x 48.1

U01S UP / U02S UP / U02RS UP / U07S UP

90 x 51 x 38.1

120 x 51 x 38.1

Vassoio portacancelleria / Stationery tray

41.4 x 22.5 x 12.5

U02X UP

90 x 51 x 49

120 x 51 x 49

Inches (L x W x H)

U01 UP / U02 UP / U02R UP / U03 UP / U04 UP / U05 UP / U07 UP

35½ x 20¼ x 19

47¼ x 20¼ x 19

U01S UP / U02S UP / U02RS UP / U07S UP

35½ x 20¼ x 15¼

47¼ x 20¼ x 15¼

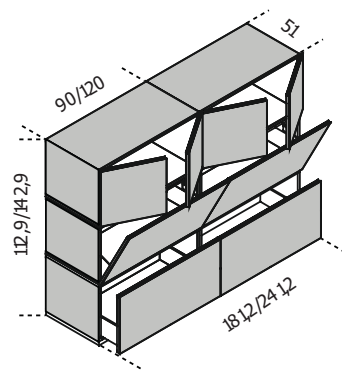
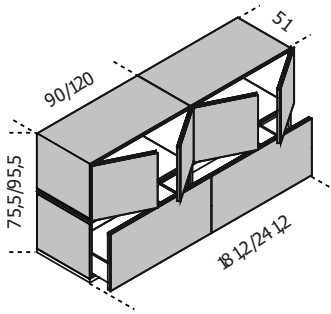
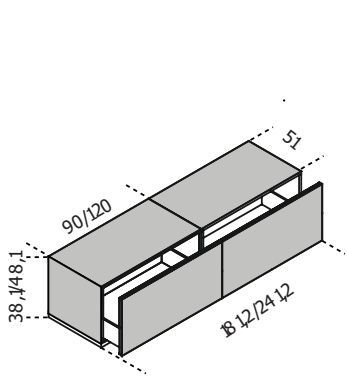
Vassoio portacancelleria / Stationery tray

16½ x 9 x 5

U02X UP

35½ x 20¼ x 19½

47¼ x 20¼ x 19½



# Finishings

## Glass



Bright black



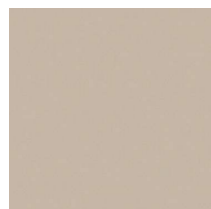
Bright blue-grey



Bright cadet blue



Bright cement



Bright  
champagne



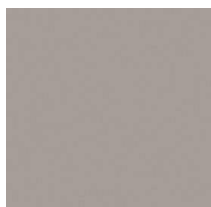
Bright dark grey



Bright green-grey



Bright liquorice



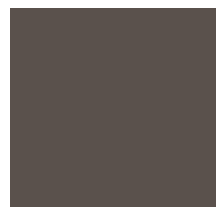
Bright mink



Bright olive



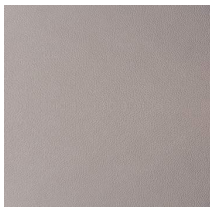
Bright rose  
powder



Bright taupe



Bright white



Leather effect  
laminated wood



Satin black



Satin blue-grey



Satin cadet blue



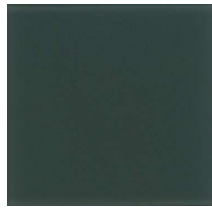
Satin cement



Satin  
champagne



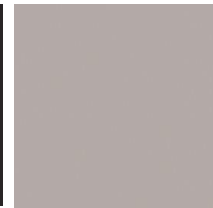
Satin dark grey



Satin green-grey



Satin liquorice



Satin mink



Satin olive



Satin rose  
powder

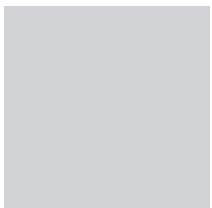


Satin taupe



Satin white

## Metal



Anodised  
aluminium